



SOUTHWEST RESEARCH INSTITUTE



DISCOVERY

REGULATORY
STRATEGY
& SUPPORT

PRODUCT
DEVELOPMENT

SCALE-UP & cGMP
MANUFACTURING

Medical & Pharmaceutical Development Services

Southwest Research Institute® (SwRI®) is a nonprofit contract research and development organization committed to advancing revolutionary pharmaceuticals to the clinic. We offer comprehensive small-molecule, medical device, and biologic development services under our current FDA license. Our facilities are FDA inspected, conform to ISO 9001:2015 and ISO 13845:2016, and can support clinical development from discovery through cGMP manufacturing. We specialize in developing enabling technologies to meet our clients' needs.

Small Molecule Development

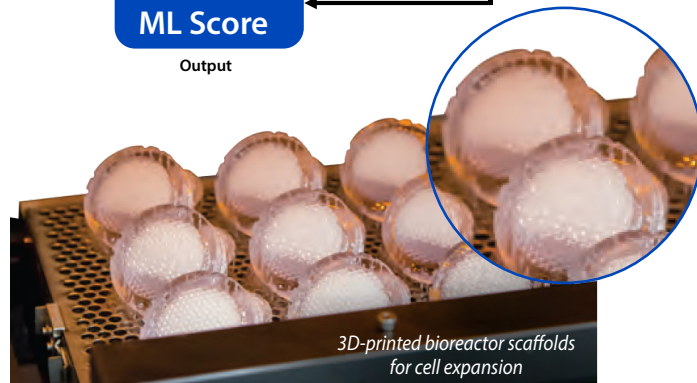
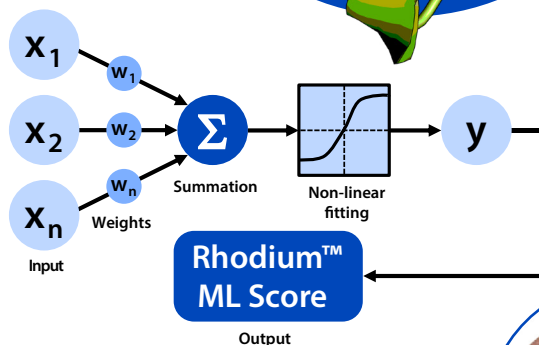
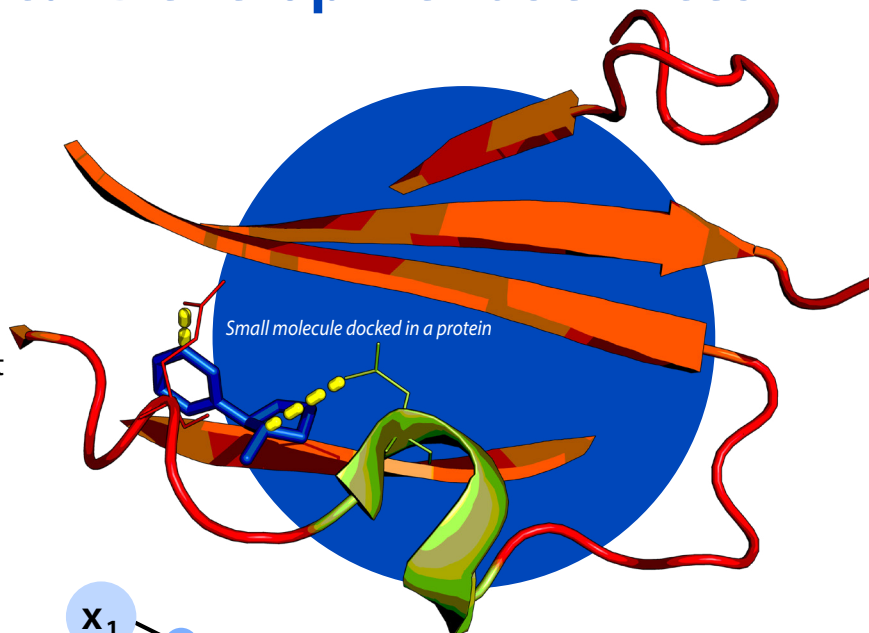
Our medicinal chemistry team can perform high-throughput virtual screening with Rhodium™, explore the chemical space, and synthesize analogues to optimize target and develop a lead compound. Rhodium™ is an award-winning, unbiased in silico docking platform for discovering new chemical scaffolds.

Data-driven Drug Design

Modern predictive algorithms can assist in development-unique capabilities. Whether developing an algorithm that can rapidly screen thousands of MRI scans to assist in cancer detection or better process large datasets of sequencing data, our team can help develop the tools needed to succeed.

Medical Devices & Bioengineering

SwRI has extensive expertise in medical device design prototyping, and testing. Our broad knowledge base includes regenerative medicine, tissue engineering, wound healing, stem cell research, biosensors, nanotechnology, bio-materials, and additive manufacturing.



3D-printed bioreactor scaffolds for cell expansion

Production and manufacturing at SwRI is limited to the research and development phase of product development in preparation for transition to a third party for commercial production and manufacturing.

For more information on our Discovery, Regulatory Strategy, Drug Product, or Manufacturing services, please visit pharmdev.swri.org

Regulatory Strategy & Support

Managing the risk of emerging pharmaceutical programs through IND filing can be difficult for companies. Our project management team can assist with identifying gaps in a pharmaceutical program, planning pivotal studies, setting up meetings with the FDA, coordinating the development of key analytical methods for phase-appropriate product specifications, and preparing and submitting IND documents.

Drug Product Development

As an innovator in microencapsulation, our team can help develop specialized formulations of small-molecule or biologic API to increase stability, modify for targeted delivery, or achieve extended release. We are also experienced in developing implantable drug delivery systems.

Small Molecule cGMP Manufacturing

Our process chemistry team can rapidly develop new scalable routes for API or kilo-scale cGMP production. Our team can develop new chemical technologies for advanced manufacturing so that an API can be commercialized efficiently.

Biological cGMP Manufacturing

SwRI has developed a novel perfusion-based bioreactor platform technology for adherent cell expansion, cell-derived biologics manufacturing, and CAR-T cell therapy, including effective selection, activation, and transduction. SwRI also is experienced in the translation, scale-up, and manufacturing of various biologics such as antibodies, nanoparticles, biomaterials, and vaccines.

We welcome your inquiries.

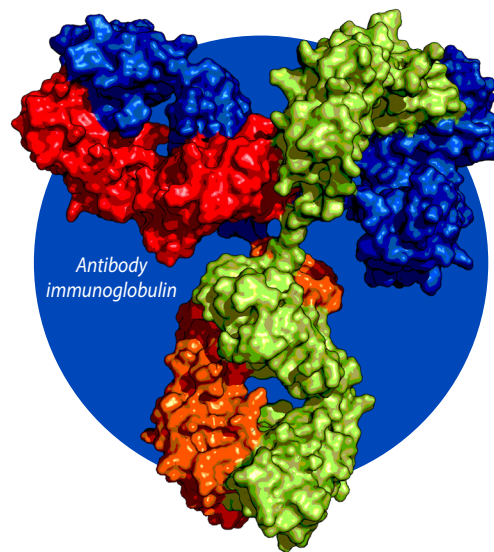
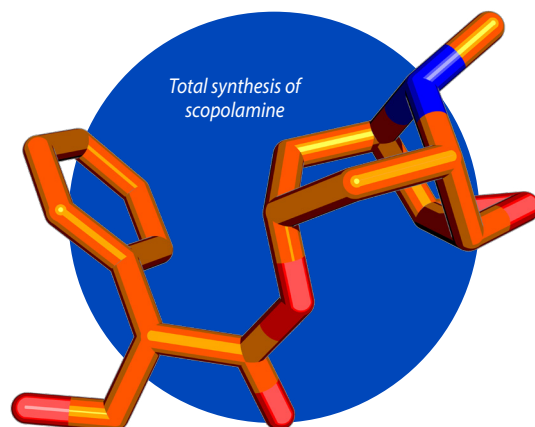
For more information, please contact:

Darrel Johnston, PMP

Director

210.522.2160

darrel.johnston@swri.org



pharmdev.swri.org

SOUTHWEST RESEARCH INSTITUTE

Southwest Research Institute® is a premier independent, nonprofit research and development organization. With eleven technical divisions, we offer multidisciplinary services leveraging advanced science and applied technologies. Since 1947, we have provided solutions for some of the world's most challenging scientific and engineering problems.

An Equal Employment Opportunity/Affirmative Action Employer
Race/Color/Religion/Sex/Sexual Orientation/Gender Identity/National Origin/Disabled/Veteran
Committed to Diversity in the Workplace

210.522.2122

ask@swri.org

Like. Share. Follow. Listen.



swri.org

©2023 Southwest Research Institute.
All rights reserved.

Designed & printed by SwRI MPS 01-0623 JCN 269762 tp