

DD13 Fuel Economy Test

SwRI has developed a fuel economy test using the DD13 engine platform for the specific purpose of evaluating benefits derived from lubricants. The EPA Supplemental Emissions Test (SET) method was used as a basis for this testing with a number of lubricant-test best practices applied.

Objective

- Quantify the efficiency benefit of an engine oil over a prescribed test cycle.
- Improve detection levels over historic fuel economy testing and vehicle-based approaches

Test Cycle Summary

- The cycle consists of 13 modes run for seven minutes to stabilize temperatures and pressures to a high level of consistency. The cycle is repeated a total of eight times with the last seven used for statistical evaluations of operation. A flush process between lubricants ensures no carryover occurs.

Test Fixture

- Modified Detroit Diesel DD13 engine.

Test Parameters

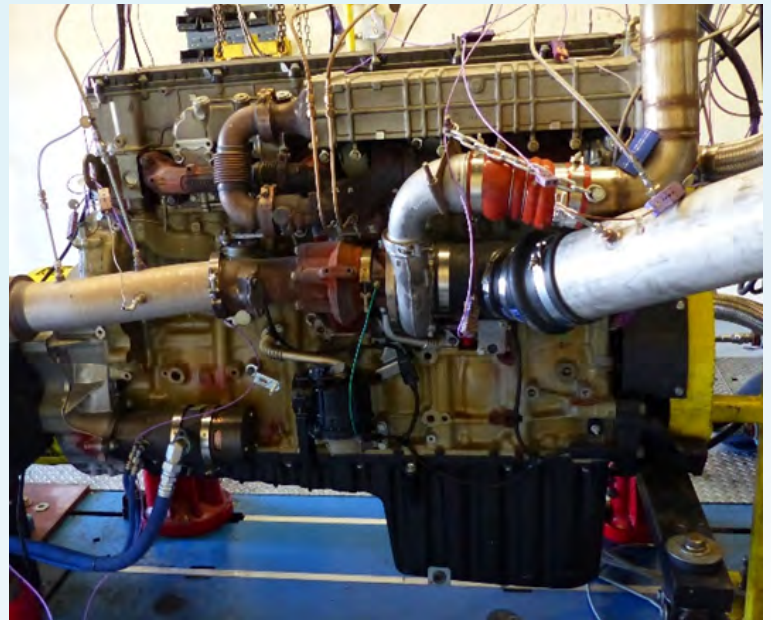
- Results are given as a percentage improvement in fuel consumption between a baseline and candidate lubricants.

Test Parts Evaluation

- None. The engine is only rebuilt as required and not between tests.

Used lubricant Analysis

- Viscosity @ 100°C (ASTM D445)
- Wear metals (ASTM D5185)
- Fuel dilution
- Soot by TGA
- Other testing as requested





◆ We welcome your inquiries.

For additional information,
please contact:

Robert Warden
Senior Research Engineer
(210) 522-5621
robert.warden@swri.org

Fuels and Lubricants Research Division

Southwest Research Institute
6220 Culebra Road • P.O. Drawer 28510
San Antonio, Texas 78228-0510

swri.org
lubricanttesting.swri.org



Southwest Research Institute is an independent, nonprofit, applied engineering and physical sciences research and development organization using multidisciplinary approaches to problem solving. The Institute occupies 1,200 acres in San Antonio, Texas, and provides more than 2 million square feet of laboratories, test facilities, workshops and offices for nearly 3,000 employees who perform contract work for industry and government clients.



Benefiting government,
industry and the public through
innovative science and technology

An Equal Employment Opportunity/Affirmative Action Employer • Race/
Color/Religion/Sex/Sexual Orientation/Gender Identity/National Origin/
Disabled/Veteran • Committed to Diversity in the Workplace

Find us on

