

# Sequence IVB Engine Test (ASTM D8350)

### Specifications

- ILSAC GF-6, API SP

### Objective

- Evaluate the effect of an automotive lubricant on tappet wear for engines with direct-acting overhead cam valvetrains.

### Test Fixture

- Toyota 2NRF 1.5L fuel-injected, inline four-cylinder engine with dual overhead cam shafts and four valves per cylinder.

### Test Parameters

- The test duration is 200 hours involving 24,000 thirty-second cycles, each cycle consisting of four stages: two steady-state stages with transition ramp stages between them.
- Unleaded Haltermann KA24E Green fuel is used.

### Test Parts Evaluation

- The volume loss due to wear on each of the 16 bucket lifters is measured using a 3D macroscope. The mass loss of each lifter is also recorded.
- Average intake lifter wear volume and end-of-test oil iron concentration are the primary evaluated parameters.

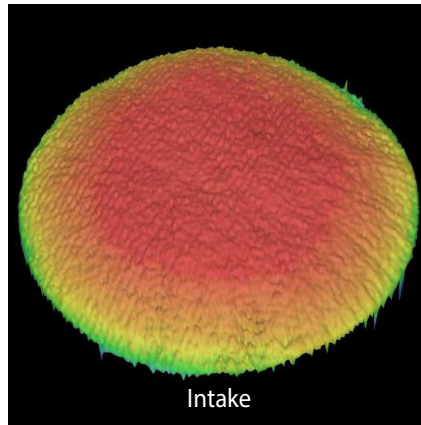
### Used lubricant Analysis

- Karl Fischer water content (ASTM D6304)
- Viscosity @ 40°C (ASTM D445)
- Acid number (ASTM D664)
- Fuel dilution (ASTM D3525)
- Base number (ASTM 4739)
- Wear metals (ASTM D5185)
- Oxidation and nitration (FTIR peak area)

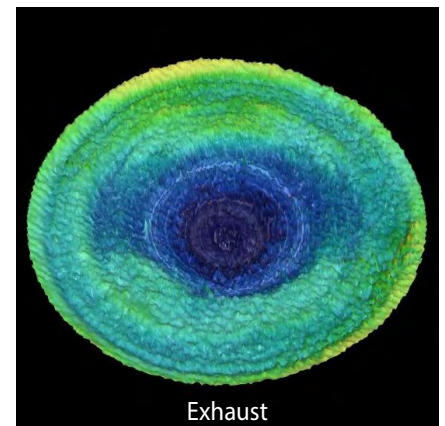
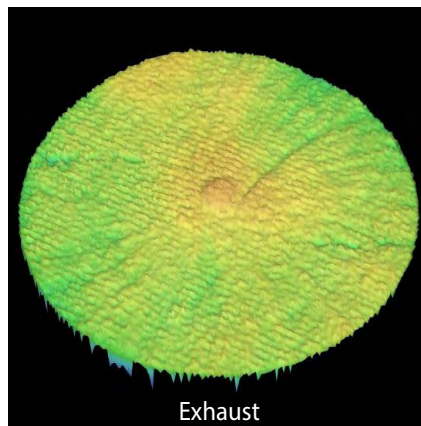
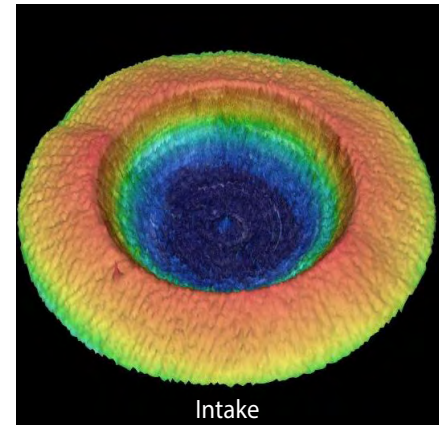
### Pass/Fail Criteria

- Maximum average intake lifter volum loss of 2.7 mm<sup>3</sup>
- Maximum end-of-test iron of 400 ppm

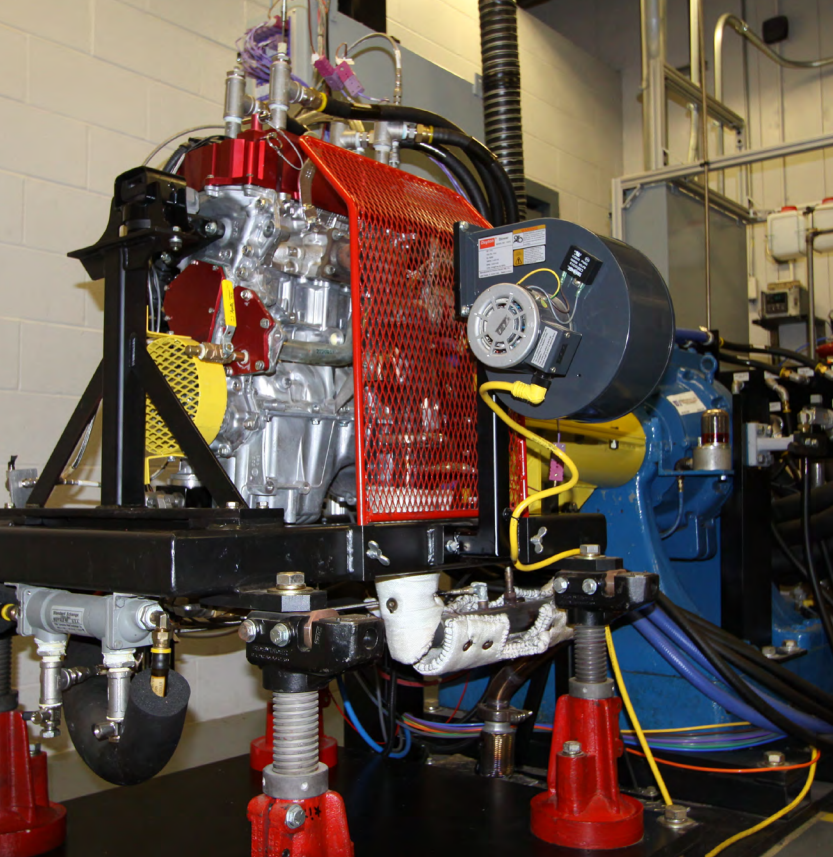
Pre-test Volume



Post-test Volume



Test Condition	Stage 1	Ramp 1 to 2	Stage 2	Ramp 2 to 1
Time, seconds	7	8	7	8
Engine speed, rpm	800	800 to 4300	4300	4300 to 800
Engine torque, Nm	25	25	25	25
Engine coolant-in temp, °C	49	49	49	49



**We welcome your inquiries.  
For additional information, please contact:**

**Khaled Rais**  
Research Engineer  
210.522.3842  
[khaled.rais@swri.org](mailto:khaled.rais@swri.org)

Fuels and Lubricants Research Division

Southwest Research Institute  
6220 Culebra Road • P.O. Drawer 28510  
San Antonio, Texas 78228-0510

[lubricanttesting.swri.org](http://lubricanttesting.swri.org)

Southwest Research Institute is an independent, nonprofit, applied engineering and physical sciences research and development organization using multidisciplinary approaches to problem solving. The Institute occupies 1,500 acres in San Antonio, Texas, and provides more than 2.3 million square feet of laboratories, test facilities, workshops and offices for more than 2,700 employees who perform contract work for industry and government clients.



Benefiting government, industry and the public through innovative science and technology

An Equal Employment Opportunity/Affirmative Action Employer • Race/Color/Religion/Sex/Sexual Orientation/Gender Identity/National Origin/Disabled/Veteran • Committed to Diversity in the Workplace

210.522.2122

[ask@swri.org](mailto:ask@swri.org)

Like. Share. Follow. Listen.



[swri.org](http://swri.org)

©2022 Southwest Research Institute.  
All rights reserved.